

# Freeform

PLASTICS

A Division of Bourgault Industries Ltd.  
NEW HOLLAND SPLIT  
AXLE MOUNTING BRACKET



## 1.1 TOWER MOUNT PLATES

Refer to *Figure 1.1* for this step.

1. Locate the two identical tower mount plates, and the eight(8) 1/2" wheel bolts. Insert the wheel bolts into the holes in the plate as shown. Ensure that they are inserted from the side with the welded tube.
2. Using a hammer, work the bolts into the holes so that the head of the bolts are flush with the surface of the mount plates.



Figure 1.1 - Tower Mount Plate

## 1.2 TOWER MOUNT PLATES

Refer to *Figure 1.2* for this step.

1. Orient the plates to the towers as shown and insert the bolts through the holes in the towers
2. Install a 1/2" lock washer and 1/2" nut onto each 1/2" wheel nut. The design of the plate and bolt should prevent the bolt from turning in the plate.



Figure 1.2 - Towers & Mount Plates

## 1.3 SPLIT AXLE MOUNT PLATES

Refer to *Figure 1.3* for this step.

1. Locate the two top and two bottom mountplates.
2. On each set of plates install 4 of a 5/8"x8" bolts with a washer and lock nut underneath. Do not completely tighten, as you will need to space them correctly.
3. Orient the plates so that the welded tube is away from the swather body as shown. The other bracket is installed in a mirrored fashion
3. Ensure that the bolts are as close to the axle beam as possible using a combination of the holes and slots.



Figure 1.3 - Split Axle Mount





Figure 1.4 - Axle Mounts

## 1.4 SECURING THE MOUNTS

Refer to *Figure 1.4* for this step.

1. Using a tape measure, space the mounts equally on the axles.
2. Ensure that the axle wheels can spin 360° without hitting the bolts or brackets
3. Tighten all bolts.

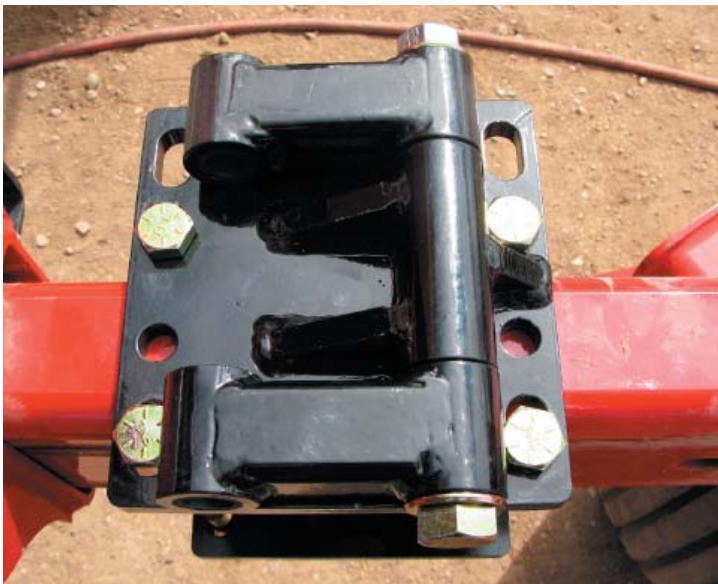


Figure 1.5 - Tower Mount Plates

## 1.5 PIVOT ARMS

Refer to *Figure 1.5* for this step.

1. Locate the four (4) pivot arms and ensure that there is a bushing inside each end.
2. Secure the pivot arms as shown with a pin and cotter pin provided(photo may not match supplied hardware).
3. Tighten the nut ensuring that the bolt engages the locking thread. The pivot arms must be able to move freely.



Figure 1.6 - Tower Mount Plates

## 1.6 MOUNTING THE TOWERS

Refer to *Figure 1.6* for this step.

1. Lower the tower/bracket assembly in between the previously installed pivot arms.
2. Secure the assembly with a pin and cotter pin provided.
3. Tighten the nut ensuring that the bolt engages the locking thread. The pivot arms must be able to move freely.

## 1.7 TOWER OPERATION

Refer to *Figure 1.7* for this step.

1. Once assembled, the tower/bracket assembly must be able to move as freely as possible.
2. Ensure that the tower lifts away from the swather cab as shown in *figure 1.7*



Figure 1.7 - Tower Mount Plates

## 1.8 ASSEMBLY MOVEMENT

Refer to *Figure 1.8*

1. Once assembled, the towers are now able to move independently of the swather's split axle.

**Note:** You may not notice movement as severe as shown in *figure 1.8* but the design will stop stress transfer to the roller assembly and prevent long term damage.



Figure 1.8 - Tower Mount Plates