

Freeform



PLASTICS

A Division of Bourgault Industries Ltd.

MT2000 HYDRAULIC SWATH ROLLER

MODEL - HYDRAULIC UNIVERSAL SERIES

Kit Part No. 2435

ASSEMBLY INSTRUCTIONS & OPERATION

EFFECTIVE S/N: FF001SR-01 - DATE

It is recommended to carefully follow the detailed steps of the assembly manual for the simplest and quickest assembly of the kit. Please check crate packing list against contents to be sure all parts have been received.

Note: This universal manual/kit is used as a general guideline for the installation of the swath roller as it pertains to many different swathers/windrowers.

On all Free Form equipment, left and right are determined by standing behind the machine and looking forward.

All information, illustrations and specifications in this manual are based on the latest product information. Free Form updates products continually to improve quality. We reserve the right to make changes at any time.

FREE FORM WARRANTY POLICY

Effective April 16, 2001

Free Form Plastic Products (referred to as Free Form), a Division of Bourgault Industries Ltd., warrants its **new**, unused, Agricultural Equipment to be free of defects in material and workmanship at time of the delivery to the first retail purchaser according to the Free Form Warranty Policy.

1) BASIC WARRANTY REPAIR PERIOD AND REMEDIES

- a) Free Form will repair or replace, at its option, without charge for parts or labour, **any defective part** of the equipment for a period of twelve (12) months from delivery to the first retail purchaser.
- b) Free Form will repair or replace, at its option, without charge for parts, any **Free Form manufactured part** that is found to be defective for the period of thirteen (13) months to twenty-four (24) months from delivery to the first retail purchaser.
- c) Free Form will repair or replace, at its option, for a charge of 50% of the parts, any **Free Form manufactured part** that is found to be defective for the period of twenty-five (25) months to thirty-six (36) months from delivery to the first retail purchaser.

Note: A **Free Form Manufactured Part** is any part which has been manufactured by Free Form. Parts purchased from an outside supplier are not considered to be manufactured by Free Form. Purchased parts would include bearings, bolts, etc...

- d) Any parts that are covered by an Extended Warranty published by Free Form, are an exception to the Basic Policy, and are to be warranted as per the details of the Extended Warranty document. The extended warranty policy may change from time to time without warning from Free Form.

2) EXTENDED WARRANTY

- a) **CULTIVATOR SHANKS** are warranted 100% for five years from date of manufacture against breakage. Breakage after the fifth year will

be covered at 50% warranty. Shanks are not warranted against bending, however, a bent shank policy is in place to provide Free Form customers with replacement shanks for 50% of list price.

3) EXCEPTIONS TO THIS WARRANTY

- a) In no event shall the owner be entitled to recover for incidental, special or consequential damages such as, but not limited to; loss of crop, loss of profit or revenue, other commercial losses, inconvenience or cost of rental of replacement equipment.
- b) **Repair, Maintenance, and Service items not related to defects:**
 - 1. Loss or damage during shipment (see: Free Form Wholegoods Shipping Policy)
 - 2. Failure resulting from lack of or improper maintenance.
 - 3. Damage caused by operator abuse, negligence, or improper operation.
 - 4. Non-defective items replaced due to customer demand unless authorized by Free Form.
 - 5. Nonreimbursable maintenance items including but not limited to oil, etc.
 - 6. Any and all costs for repairs or replacement of parts not shown to be defective.
 - 7. Damage due to accidents.
- c) **Cultivator Sweeps, Reversible Chisels, and Ground Engaging Tools** are **not** covered under this warranty policy, but by the warranty policy of their manufacturer.
- d) **Rubber Tires** are warranted directly by the tire manufacturer's agents only, and **not** by Free Form.
- e) **Replacement Parts** will be warranted for twelve months from the repair date, providing the bill of sale is attached to the warranty claim.
- f) The terms of this warranty are subject to Provincial and State Legislation. Free Form reserves the right to make changes in accordance with these Acts at any time without notification

FREEFORMWARRANTYPOLICY(CONT'D)

or obligation. The stated warranty contained in the Free Form Warranty Policy applies in all situations, unless the law provides a greater warranty in the jurisdiction of the retail customer.

- g) Free Form reserves the right to continually improve its equipment, and reserves the right to change products or specifications at any time without notice or obligation.

4) OWNER'S OBLIGATION

It is the **responsibility of the owner, at the owner's expense, to transport the equipment to the service shop of an authorized Free Form Dealer (place of purchase) or alternately to reimburse the dealer for any travel or transportation expense** involved in fulfilling this warranty.

It is the **responsibility of the owner to read, understand and practice the maintenance, safety, and operational guidelines set out in the operator's manual** furnished with the equipment.

It is the owner's responsibility to ensure that the Warranty Registration, which must be signed by the owner, is completed and returned to Free Form by the dealer. The completed and signed Warranty Registration is required to register a new unit for warranty.

TABLE OF CONTENTS

FREE FORM WARRANTY POLICY.....	2
1 SAFETY	5
1.1 GENERAL SAFETY	6
1.2 OPERATING SAFETY	6
1.3 MAINTENANCE SAFETY	6
1.4 TRANSPORT SAFETY	6
2 PLEASE READ BEFORE CONTINUING INSTALL.....	7
3.1 HYDRAULIC FITTINGS ASSEMBLY	8
3.2 VALVE BLOCK "AUX LIFT" INSTALL.....	9
3.3 RETURN LINE HOOK UP.....	10
3.4 SUPPLY LINE HOOK UP	10
3.5 ELECTRICAL HARNESS	10
3.6 SOLENOID ELECTRICAL	11
3.7 SWITCH INSTALL.....	11
3.8 FINAL ASSEMBLY	11
3.9 ELECTRICAL DIAGRAM	12
3.10 HYDRAULIC DIAGRAM.....	13
4 HYDRAULIC SWATH ROLLER USE AND OPERATION.....	14
4.1 ADJUSTING THE SWATH ROLLER	14
4.2 SETTING THE HYDRAULICS	14
4.3 SETTING THE DEPTH	14
4.4 TRANSPORT LOCKS	15
5 PARTS	16
5.1 SWATHROLLER HYDRAULIC FITTINGS.....	16

1 SAFETY

SAFETY ALERT SYMBOL

This Safety Alert symbol means

ATTENTION!

BECOME ALERT!

YOUR SAFETY IS

INVOLVED!



The Safety Alert symbol identifies important safety messages. When you see this symbol, be alert to the possibility of personal injury or death. Follow the instructions in the safety message.

Why is SAFETY important to you?

Accidents Disable and Kill

3 Big Reasons

Accidents Cost

Accidents Can Be Avoided

SIGNAL WORDS:

Note the use of the signal words **DANGER**, **WARNING**, and **CAUTION** with the safety messages. The appropriate signal word for each message has been selected using the following guidelines:

DANGER -

Indicates an imminently hazardous situation that, if not avoided, will result in death or serious injury. This signal word is to be limited to the most extreme situations, typically for machine components that, for functional purposes, cannot be guarded.

WARNING -

Indicates a potentially hazardous situation that, if not avoided, could result in death or serious injury, and includes hazards that are exposed when guards are removed. It may also be used to alert against unsafe practices.

CAUTION -

Indicates a potentially hazardous situation that, if not avoided, may result in minor or moderate injury. It may also be used to alert against unsafe practices.

1 SAFETY (CONT'D)

YOU are responsible for the **SAFE** operation and maintenance of your Free Form equipment. **YOU** must ensure that you and anyone else who is going to operate, maintain or work around the equipment be familiar with the operating and maintenance procedures and related **SAFETY** information contained in this manual. This manual will take you step-by-step through your working day and alerts you to all good safety practices that should be adhered to while operating the unit.

Remember, **YOU** are the key to safety. Good safety practices not only protect you but also the people around you. Make these practices a working part of your safety program. Be certain that **EVERYONE** operating this equipment is familiar with the recommended operating and maintenance procedures and follows all the safety precautions. Most accidents can be prevented. Do not risk injury or death by ignoring good safety practices.

- The most important safety device on this equipment is a **SAFE** operator. It is the operator's responsibility to read and understand **ALL** Safety and Operating instructions in the manual and to follow these. All accidents can be avoided.
- Do not modify the equipment in any way. Unauthorized modification may impair the function and/or safety and could affect the life of the equipment.
- **Think SAFETY! Work SAFELY!**

1.1 GENERAL SAFETY

1. Read and understand the Operator's Manual
2. Have a first-aid kit available for use should the need arise and know how to use it.
3. Wear appropriate protective gear. This list may include but is not limited to:
 - A hard hat
 - Protective shoes with slip resistant soles
 - Protective goggles
 - Heavy gloves
 - Hearing protection

1.2 OPERATING SAFETY

1. Read and understand the Operator's Manual and all safety signs before using.
2. Attach securely to towing unit using a pin with a retainer.
3. Do not exceed a safe travel speed.
4. Use hazard flasher on towing unit when transporting.
5. Review safety instructions annually.

1.3 MAINTENANCE SAFETY

1. Follow good shop practices:
 - Keep service area clean and dry.
 - Be sure electrical outlets and tools are properly grounded.
 - Use adequate light for the job at hand.
2. Use only tools, jacks and hoists of sufficient capacity for the job.

1.4 TRANSPORT SAFETY

1. Read and understand **ALL** the information in the Operator's Manual regarding procedures and **SAFETY** when operating the swath roller in the field and/or on the road.
2. Always travel at a safe speed. Use caution when making corners or meeting traffic.
3. Make sure the reflectors required by the local highway and transport authorities are in place, are clean and can be seen clearly by all overtaking and oncoming traffic.

Note: The slow moving vehicle sign and flashing lights on the swather must be visible from behind when the MT2000 is secured in the transport position.

4. Be sure that the TB2000 is hitched positively to the towing vehicle and a retainer is used through the drawbar pin. Be sure that the MT2000 is secured properly with **both** transport locks and the pins are secured.
5. Keep to the right and yield the right-of-way to allow faster traffic to pass. Drive on the road shoulder, if permitted by law.
6. Do not exceed 20 m.p.h. (32 km/h). Reduce speed on rough roads and surfaces.

2 PLEASE READ BEFORE CONTINUING INSTALL

THE FOLLOWING INSTALLATION INSTRUCTIONS ARE FOR SWATHERS THAT DO NOT HAVE A SPECIFIC KIT MADE FOR THEM. IF YOU ARE NOT SURE IF YOU HAVE THE CORRECT KIT, PLEASE CONTACT THE FACTORY. THIS KIT IS MEANT TO BE USED ON A BROAD RANGE OF SWATHERS. WE HAVE PROVIDED THE MOST COMMON FITTINGS TO INSTALL ON MOST SWATHERS. A GENERAL HYDRAULIC ROUTING DIAGRAM IS PROVIDED. FOR SPECIFIC ROUTING PLEASE CONTACT YOUR DEALER FOR ASSISTANCE.

THANK YOU FOR YOU COOPERATION AND FEEDBACK.
IF YOU HAVE ANY QUESTIONS PLEASE DO NOT HESITATE TO CALL
FREE FORM PLASTICS @ 306-275-2155

3.1 HYDRAULIC FITTINGS ASSEMBLY

Refer to *Figures 3.1 & 3.2* for this step.

1. The LEFT hydraulic ram requires the following assemblies of hydraulic fittings. (#1) 2293 -180" Hydraulic Hose 6FJX-6FJX90 (#2)-6MJ-6MP fitting (#3)-6FPT fitting (#4)-6MP-6MP fitting (#5)- Quick Coupler Male x 6FP (#6)-Quick Coupler Female x 6FP (#7) 2291-130" Hydraulic Hose 6FJX-6FJX90.

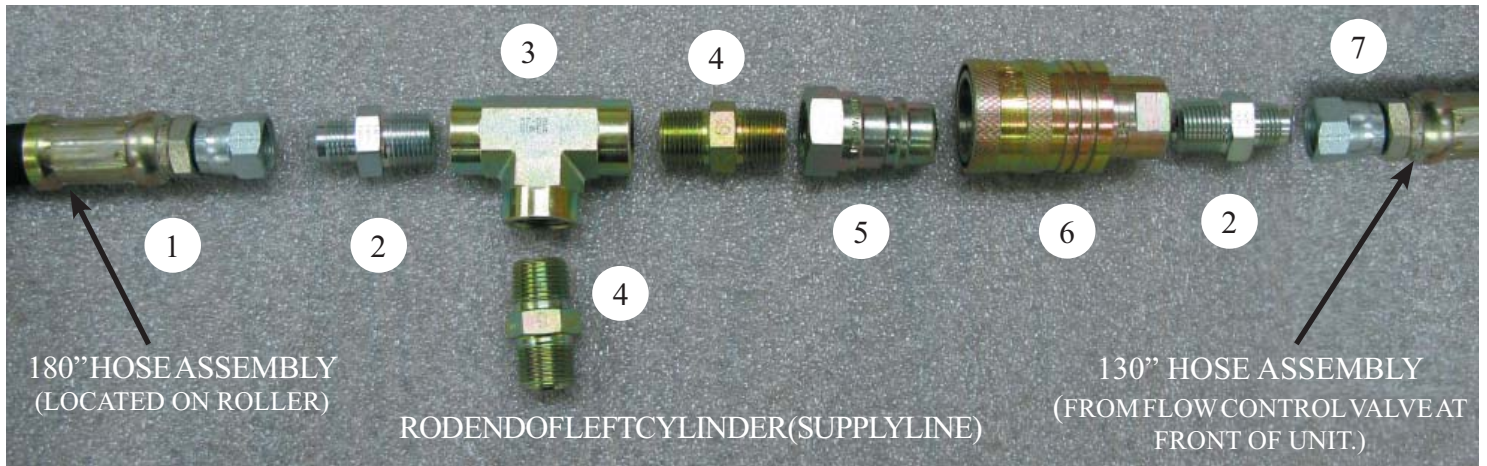


Figure 3.1 -Rod End Assembly of LEFT Cylinder

2. On the RIGHT cylinder, thread a 6MJ-6MP fitting (#2) into the rod end of the cylinder. Attach the 180" (#1) hydraulic line to it's corresponding end as per the assemblies of the LEFT cylinder. See *figure 3.2*

NOTE: USE HYDRAULIC APPROVED PIPE DOPE ON PIPE THREAD FITTINGS

3. In the cap end of each cylinder, install a breather plug (#18) as seen in *figure 3.3*.

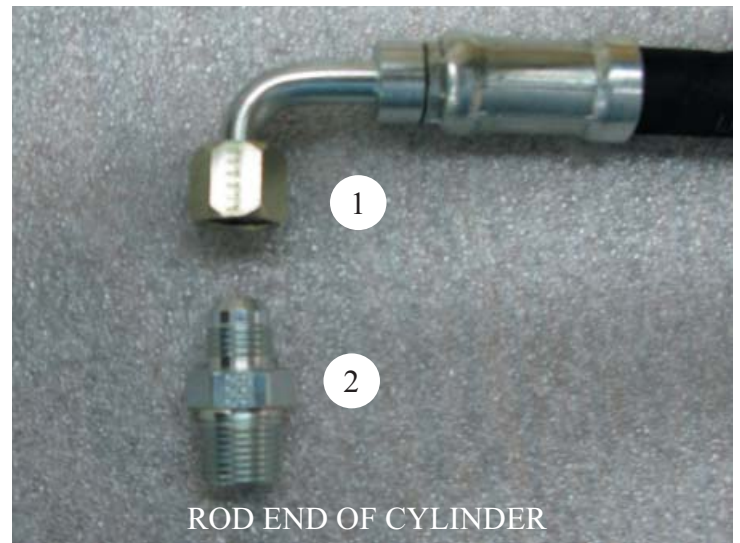


Figure 3.2 - Fitting Assembly of RIGHT Cylinder



Figure 3.3 - Fitting Assembly of RIGHT Cylinder

3.2 VALVEBLOCK“AUXLIFT”INSTALL

Refer to *Figures 3.4 & 3.5* for this step.

1. Assemble the needle valve assembly as per *figure 3.4*. The parts are as follows; (#14)-6MBP in port B, (#11)-6MB-6FJX in port A, (#13)-6MJ-6FJX90 (#10)-6MB-6MJ (#9)-6ORB Needle Valve (#15)-Solenoid wiring connector (#16)-Valve Solenoids (#12) Hydraulic Valve.
2. Since this is a universal kit, it is hard to know exactly what will be needed to properly install the hydraulics. We have provided the basic parts needed for operation but additional fittings may be required to properly connect the parts. We have supplied 6MB-6MJ connectors (#20, #21) to connect the pressure port C and return port D lines to the switch block (#12) lines to the switch block (#12)
3. *Figure 3.5* illustrates the ideal setup for the hydraulic routing. The hydraulic cylinders (#17) are fed by a pressure line with a needle valve (#9) from the main switch block (#12) connected to port A. The one side of the block is tee'd into a fixed displacement pump (#19) circuit (#22) connecting to the block at port C. Port D on the block is tee'd into the tank line (#21). Port B is plugged (#14).
4. When the block is switched “UP” or “IN” (S1) the pump (#19) feeds the cylinders (#17) and the tank line (#21) is blocked. When the switch is in the middle position (OFF) the ram line is blocked, holding the cylinders either up or down. When the block is switched “DOWN” or “OUT” (S2), the cylinder line is connected to the tank line and the weight of the roller assembly will force the hydraulic fluid back into the tank and lower the roller assembly.

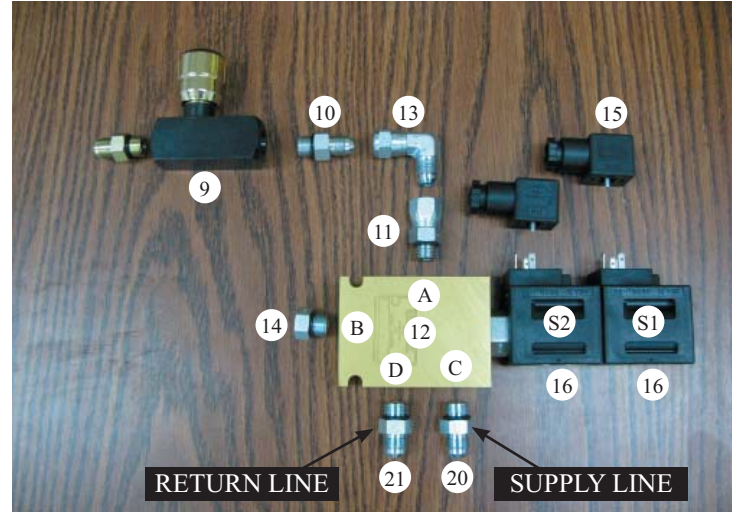


Figure 3.4 -Hydraulic Valve & fittings

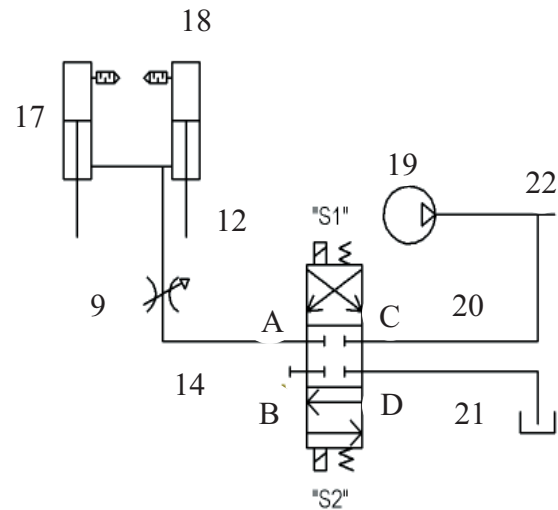


Figure 3.5 - Hydraulic Schematic

3.3 RETURN LINE HOOK UP

1. The return line connects to the tank side of the existing hydraulic system.
2. Connect the other end of the return line to the valve as shown in *Figure 3.7*.

3.4 SUPPLY LINE HOOK UP

The supply line connects to the pressure side of the existing hydraulic system. There will be a fixed displacement pump that supplies the header lift and reel lift circuit. This is the circuit to tee into.

3.5 ELECTRICAL HARNESS

Refer to *Figure 3.6* and the electrical diagram on page 12 for this step.

1. The supplied wiring harness will allow you to plug and play to hook up your electrical circuit.
2. Feed the switch (#29) which is connected to harness #2607 into the cab of the swather through an access port.
3. Using wire harness #2606 connect the black wire (#27) to a chassis ground or the NEG terminal of the battery and connect the red wire (#28) to an ignition switched terminal.
Note: Connecting directly to live power will leave the roller operational in the downward motion.
4. Using wire harness #2703 you will need to connect onto the “open center” solenoid valve or “Dump Valve” which will be located in the valve block where the reel lift and table lift circuits are.
5. There is a 5A fuse (#26) built in for circuit protection.
6. Connectors 15A & 15B connect to the hydraulic switch block (#12)

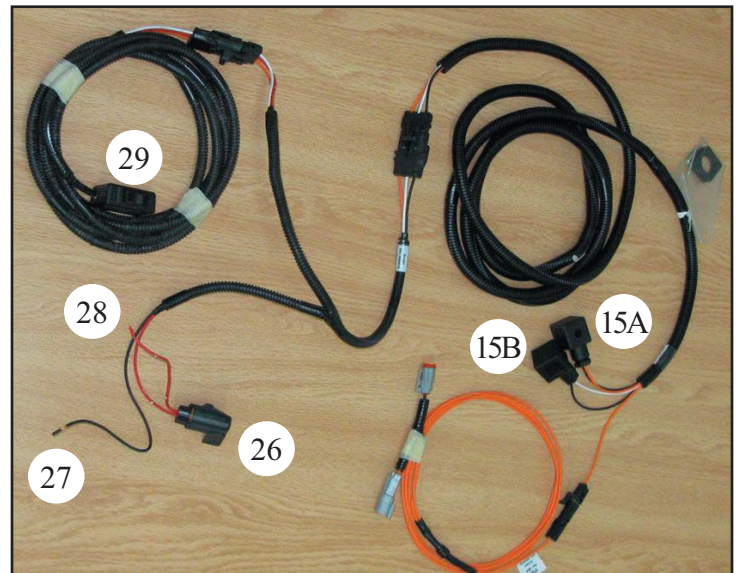


Figure 3.6 -Switch Box Top View

3.6 SOLENOID ELECTRICAL

Refer to *Figure 3.7* for this step.

1. Locate the solenoid connectors (#15A & #15B) on the end of the wire harness. The connector with the orange wire is the “UP” or “IN” circuit and must be connected to plug (S1). The connector (#15) with the white wire is to be connected to plug (S2).
2. Ensure that the supplied gasket is installed between the connector and the solenoid. The gaskets and mounting screws are in a small bag attached to the harness.

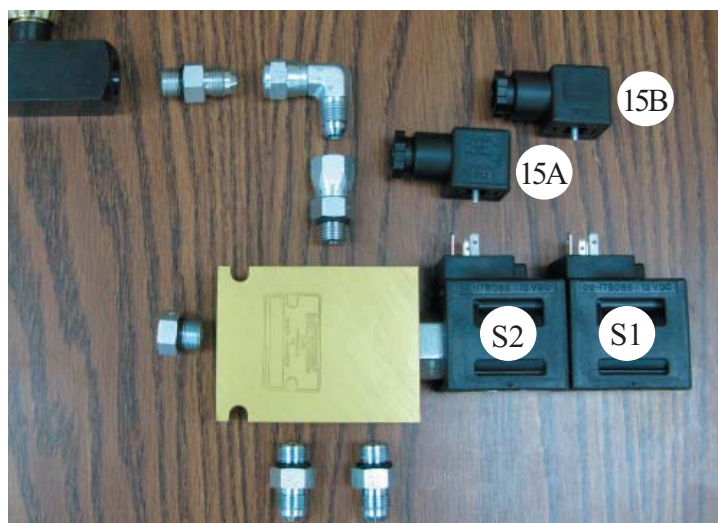


Figure 3.7 - Solenoid Connections

3.7 SWITCH INSTALL

Refer to *Figures 3.8* for this step.

1. Once the solenoid connectors are connected, run the switch into the cab of the swather.
2. Using the supplied hardware, connect the mounting bracket to the desired location.
3. Test the switch's (#29) operation by operating the roller up and down with the switch.



Figure 3.8 - Switch Installation

3.8 FINAL ASSEMBLY

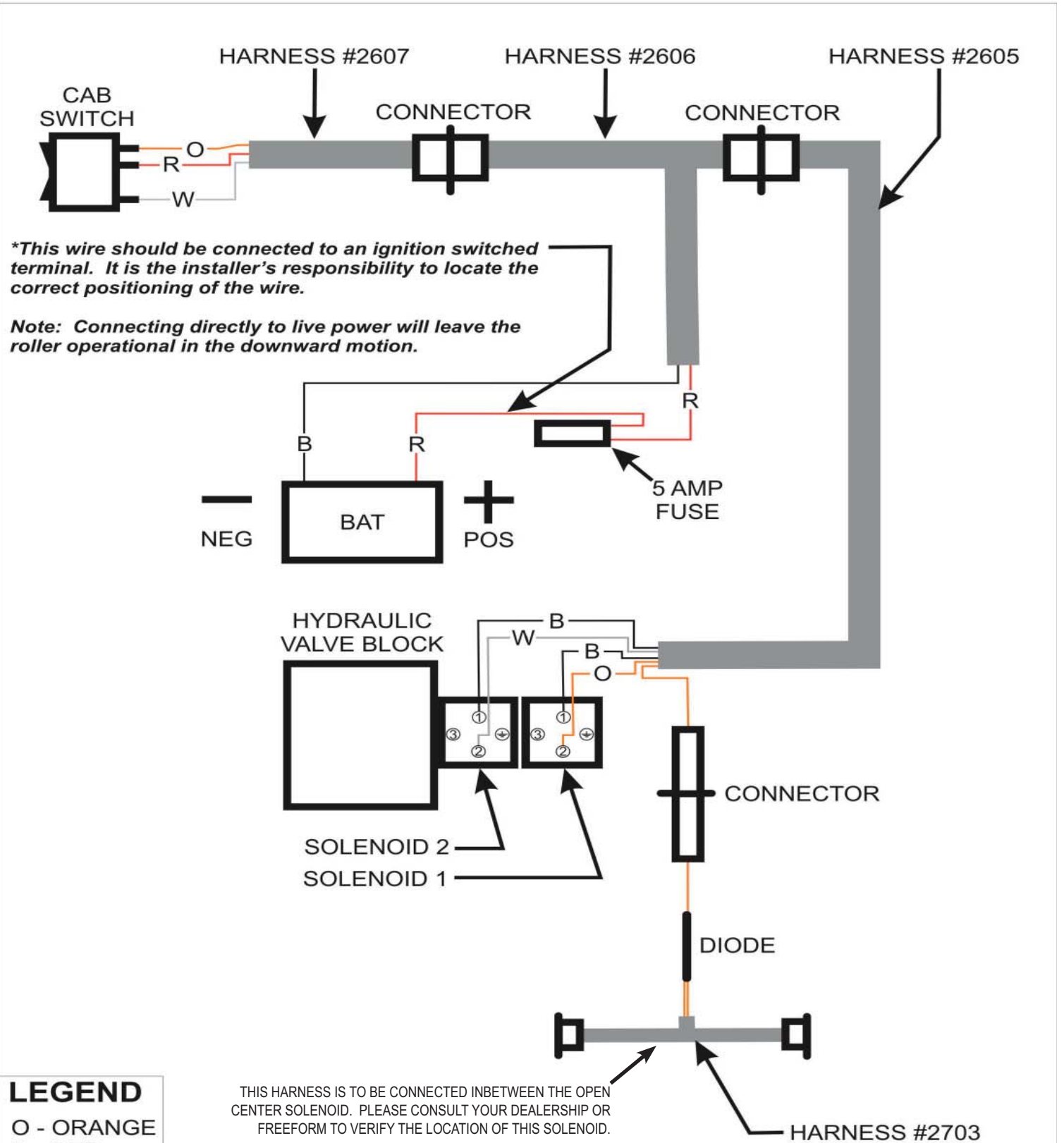
Adjust the swath roller assembly up and down. Check for binding, interference, or loose bolts. Check that the transport arms can lock into place.

Note: The SMV (Slow Moving Vehicle) sign and lights must be visible from the rear. Move the SMV sign and/or lights if required to ensure their visibility.

3.9 ELECTRICAL DIAGRAM

FFP Universal Swathroller Electrical Diagram

Macdon M100, NH 8000 SER, Case WD 3 SER, JD R450/R400, Universal



LEGEND

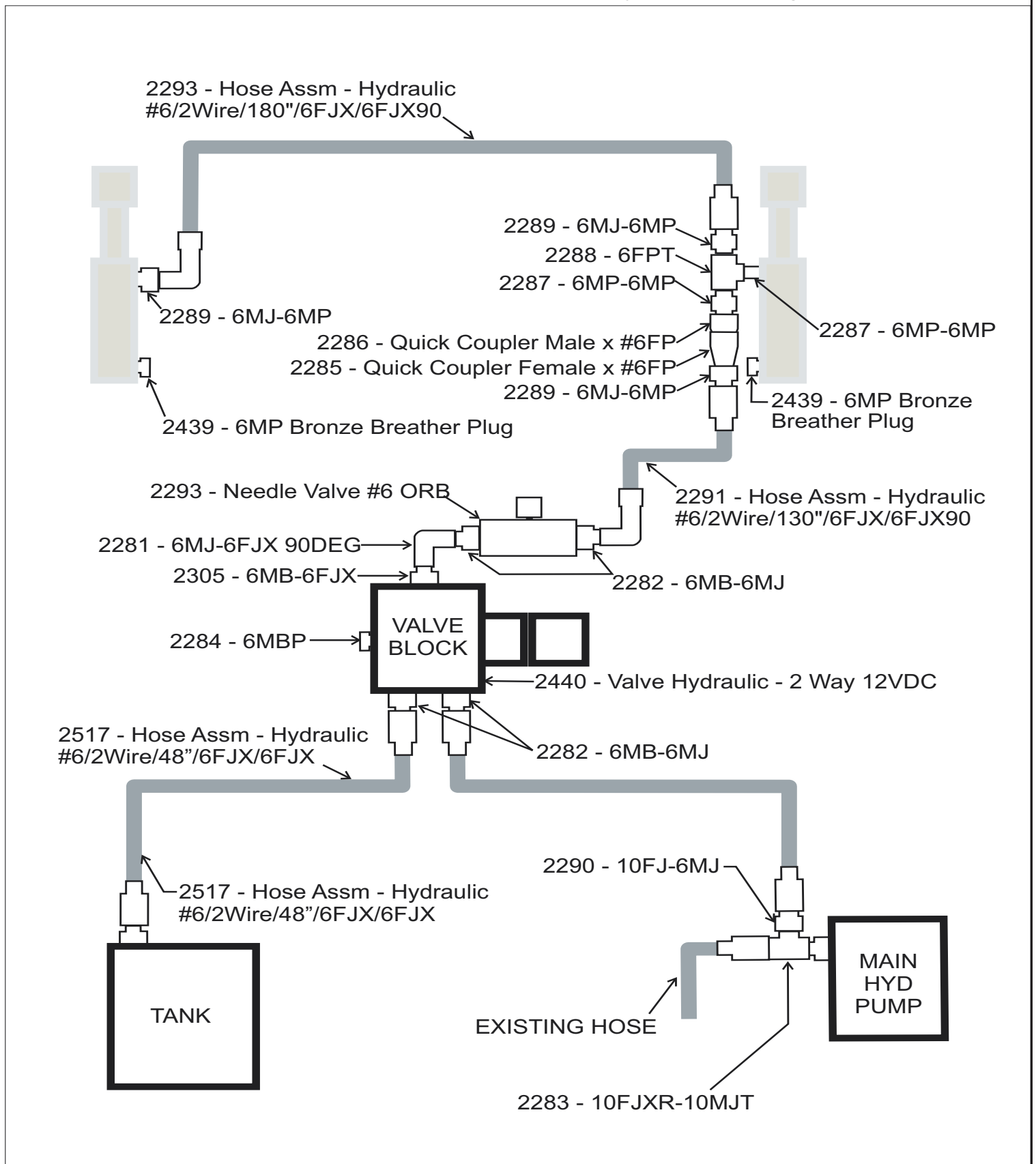
- O - ORANGE
- R - RED
- W - WHITE
- B - BLACK

THIS HARNESS IS TO BE CONNECTED IN BETWEEN THE OPEN CENTER SOLENOID. PLEASE CONSULT YOUR DEALERSHIP OR FREEFORM TO VERIFY THE LOCATION OF THIS SOLENOID.

3.10 HYDRAULIC DIAGRAM

UNIVERSAL FFP Swathroller Hydraulic Diagram

2435 - FFP Swath Roller MT2000H - Hyd Universal Pkg



4 HYDRAULIC SWATH ROLLER USE AND OPERATION

4.1 ADJUSTING THE SWATH ROLLER

Refer to *Figure 4.1* for this step.

1. To adjust the width of your swath roller, loosen the two pins on each end of the swath roller.
2. Slide the ends in or out to the desired width. The width of the roller is marked on the main drum.
3. Tighten the pins once the width is set.

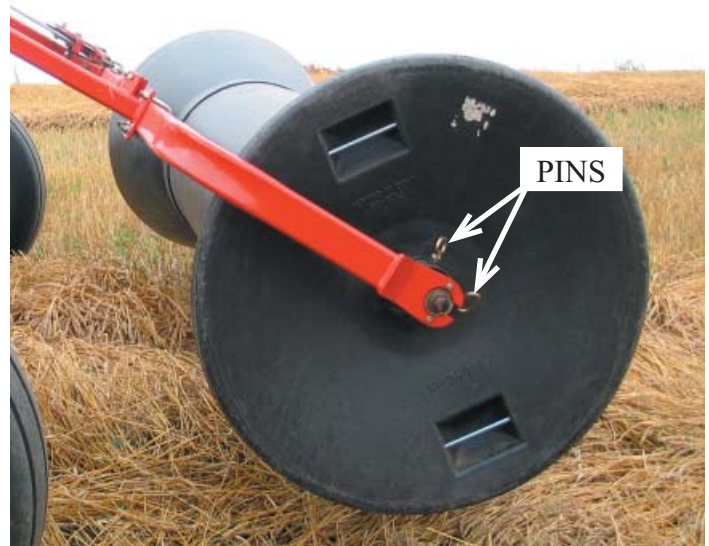


Figure 4.1 - Roller Adjustment

4.2 SETTING THE HYDRAULICS

Refer to *Figure 4.2* for this step.

1. The roller is adjustable up and down using the switch in the cab.
2. The needle valve at the front hydraulic block is used to control the rate of movement.
3. Turning the knob **CLOCKWISE** will **SLOW** the roller's rate of movement while turning the knob **COUNTER CLOCKWISE** will **INCREASE** the roller's rate of movement.
4. After cycling the roller up and down a few times, check the swather's hydraulic fluid level and top up if required.

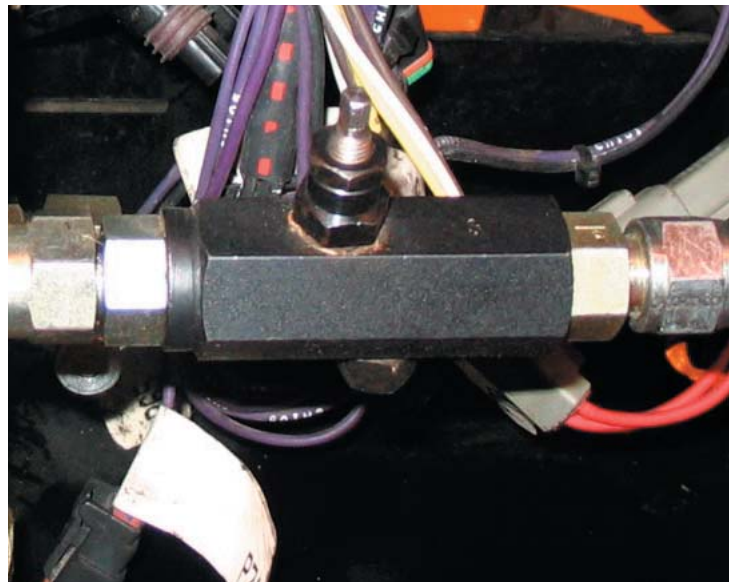


Figure 4.2 - Needle Valve
(Photo may not match the valve supplied)

4.3 SETTING THE DEPTH

Refer to *Figure 4.3* for this step.

1. The roller assembly can be set to lower to a predetermined stop point using the bars next to the hydraulic rams.
2. Using a combination of the holes on the main bar and the holes of the sliding collar (#20), you can set the roller's minimum height.
3. Secure the collar (#20) with the supplied locking pin (#13).

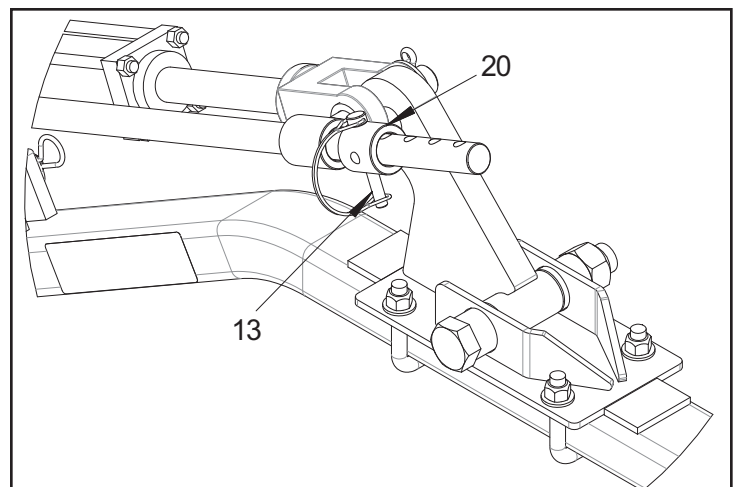


Figure 4.3 - Depth Adjustment

4.4 TRANSPORT LOCKS

Refer to *Figure 4.4* for this step.

1. When transporting the swather or while driving the unit on roadways, use the roller assembly's transport locks. This will take the weight off of the hydraulic components and increase service life.
2. Remove the pin (#16) from the ram/cylinder mounting tab (#24), location "A".
3. Raise the swath roller until the hole in transport lock lever (#25) lines up with the holes on the ram/cylinder mounting tab (#24).
4. Insert the pin (#16) through all holes and secure with a cotter pin (#12).
5. Lower the roller to relieve pressure on the hydraulics.

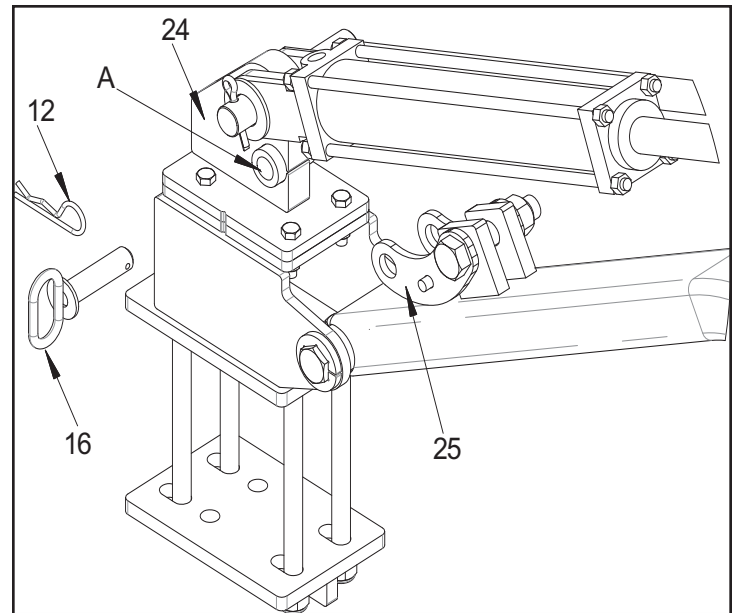


Figure 4.4 - Transport Lock

Caution: *Before operation of machine ensure adequate distance between the roller and the exhaust pipe. Heat from the exhaust can cause roller deformation. This will void warranty on the roller.*

5 PARTS

5.1 SWATHROLLER HYDRAULIC FITTINGS

PART #	DESCRIPTION	QTY.
1010-61	BOLT 5\8X6 UNC GR8 PLD.....	8
1010-73	BOLT 5\8X8 UNC GR5 PLD.....	8
2281	6MJ-6FJX90.....	1
2282	6MB-6MJ.....	4
2283	10FJXR-10MJT.....	1
2284	6MBP.....	1
2285	QUICK COUPLER FEMALE 6FP.....	1
2286	QUICK COUPLER MALE 6FP.....	1
2287	6MP-6MP.....	2
2288	6FPT.....	1
2289	6MJ-6MP.....	3
2290	10FJ-6MJ.....	1
2291	HOSE/6\2WIRE/130\6FJX\6FJX90.....	1
2293	HOSE/6\2WIRE/180\6FJX\6FJX90.....	1
2305	6MB-6FJX.....	1
2437	10MB-10MJ90.....	1
2438	10MB-10FJX90.....	1
2439	6MP BRONZE BREATHER PLUG.....	2
2440	VALVE HYDRAULIC 2 WAY 12 VDC.....	1
2516-01	ARM EXT MNT COM FF SW.....	1
2516-02	TWR ASSY, HIGH LIFT.....	1
2517	HOSE/6\2WIRE/48\6FJX\6FJX.....	2
2605	HARNESS - SOLENOID.....	1
2606	HARNESS - BATTERY.....	1
2607	HARNESS - SWITCH.....	1
2703	HARNESS - DEUTSCH.....	1
2932	VALVE HYDRAULIC NEEDLE 6 ORB.....	1